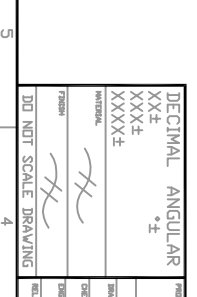
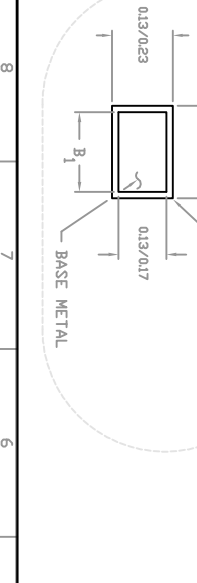
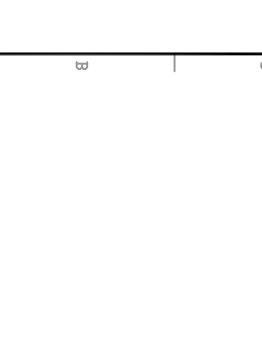
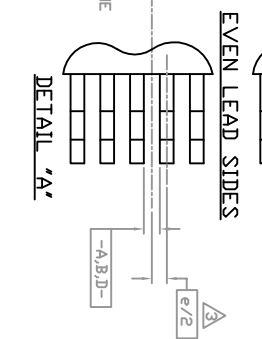
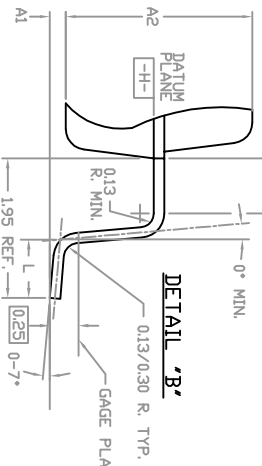
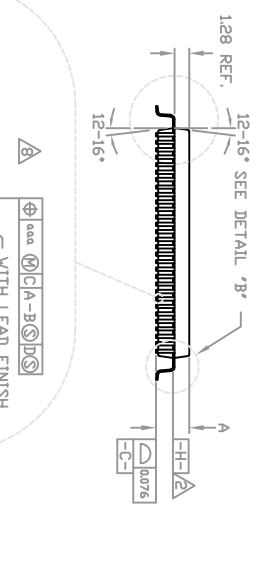


ϕ 0.20 H/A-B/S/D/S/A	ϕ 0.20 H/A-B/S/D/S/D
ϕ 0.20 H/A-B/S/D/S/A	ϕ 0.20 H/A-B/S/D/S/D
ϕ 0.05 H/A-B/S/D/S/A	ϕ 0.05 H/A-B/S/D/S/D

REV.	DESCRIPTION	DATE	APPROVED
12	REVISED PER DCN #D21858, KENG-4/-2/3 BECOMES 30649/12)	11/09 1994	Y.M.K.
13	REVISED PER DCN #D22207.	05/25 1995	Y.M.K.
14	REVISED PER DCN #D22452.	05/27 1995	Y.M.K.



DECIMAL ANGULAR ±0.2

XXXX±

XXXX±

APPROVALS

DESIGNED MS MOON 05/27

DRAWN Y JANG 05/27

CHECKED BH PARK 05/27

RELEASED YM KANG 05/27

DATE 05/27

DATE 05/27

DATE 05/27

DATE 05/27

DATE	APPROVED
11/09 1994	Y.M.K.
05/25 1995	Y.M.K.
05/27 1995	Y.M.K.

30649 14

Agilent Industrial Co., Ltd. Agilent Electronics, Inc.

3000 Central Expressway, Santa Clara, CA 95051, USA (408) 755-6000

1000 Parkway Drive, Bldg 600, Palo Alto, CA 94301, USA (650) 924-5000

Copyright © 2001 Agilent Technologies, Inc. All rights reserved.

Printed in the USA

30649 14