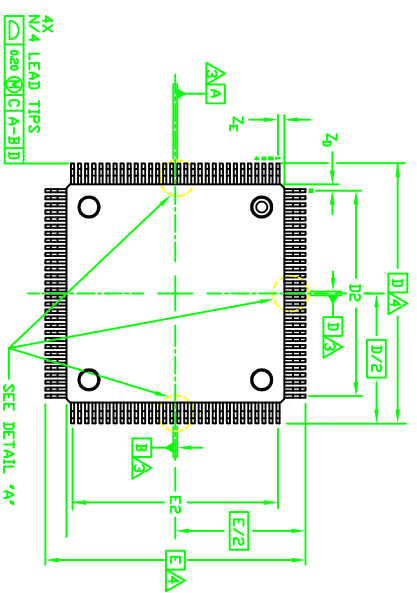
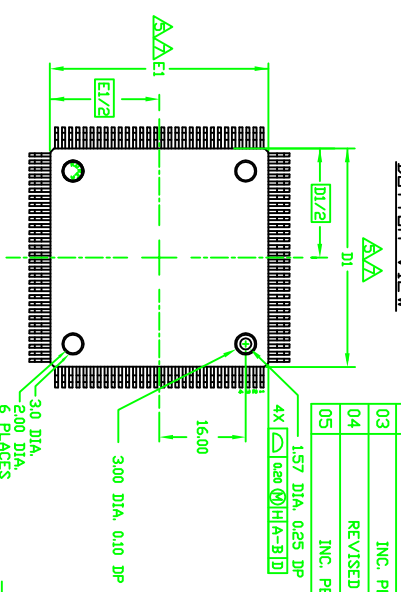


REV.	DESCRIPTION	DATE	DESIGNATOR
00	INITIAL RELEASE PER DCN #A37036.	11/19 1993	Y.M.K
01	INC. PER DCN #D21167.	03/07 1994	Y.M.K
02	INC. PER DCN #D21853.	10/28 1994	Y.M.K
03	INC. PER DCN #A41465	09/17 1994	G.J.K
04	REVISED PER DCN #D25460	01/23 1998	M.P.
05	INC. PER DCN #A53842	06/27 2002	DDHKIM

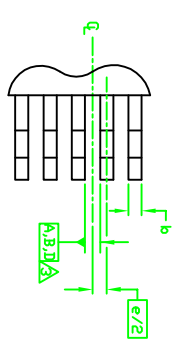
TOP VIEW



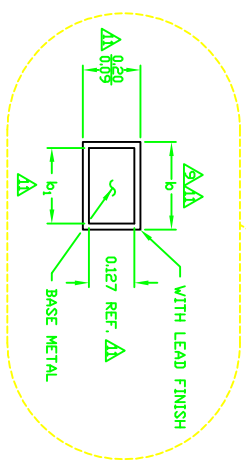
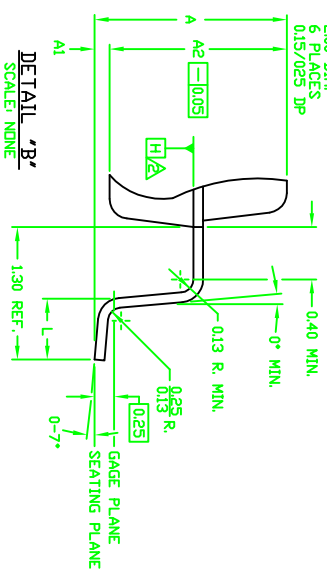
BOTTOM VIEW



DETAIL 'A'
EVEN LEADS ONLY



DETAIL 'B'
SCALE NONE



DECIMAL ANGULAR		±	
XXXX		±	
XXXXX		±	
MINOR		±	
FINISH		±	
DIM NOT SCALE DRAWING		±	

APPROVALS	DATE	TITLE
JH CHD	06/13	PACKAGE OUTLINE, 304 LEAD, MOFP-22,
IQ PARK	06/13	40 X 40 MM BODY, 1.30/0.43 MM FORM, 3.80 MM THICK
JH CHD	03/26	
JH CHD	03/17	
YM KANG	1997	

34915	REV. 05
8/1	SHEET 1 OF 2

Asia Industrial Co., Ltd. Motor/Van Engines, JSC.
 SINGM
 SINGM
 SINGM