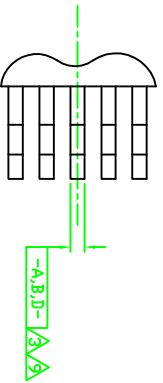
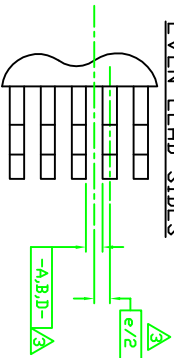


REV.	DESCRIPTION	DATE	BY
00	INITIAL RELEASE PER DCN #A33056.	12/74	H.J.C.
01	INC. PER DCN #A33748.	07/82	H.J.C.
02	INC. PER DCN #A34268.	06/80	H.J.C.
03	INC. PER DCN #A34644.	12/92	Y.M.K.
04	INC. PER DCN #A34900.	03/90	Y.M.K.
05	REVISED PER DCN #D21885. ENG-AE-305 BECOMES 31791/05.)	11/22	E.B.A.
06	REVISED PER DCN #D22156.	02/85	E.B.A.
07	REVISED PER DCN #D24725.	12/90	M.P.
		1995	

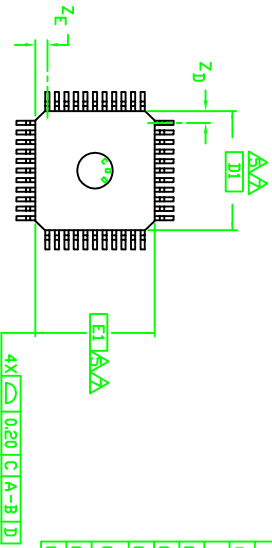
DDD LEAD SIDES



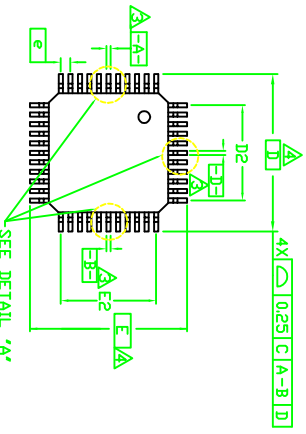
EVEN LEAD SIDES



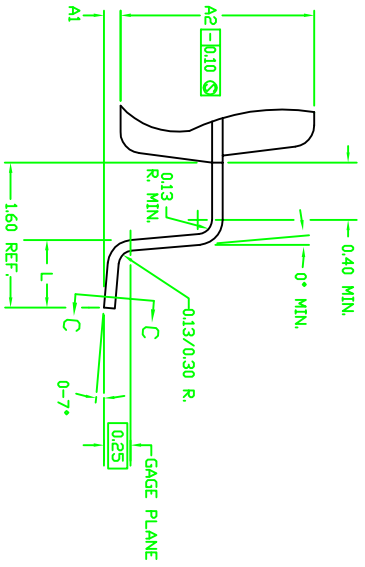
BOTTOM VIEW



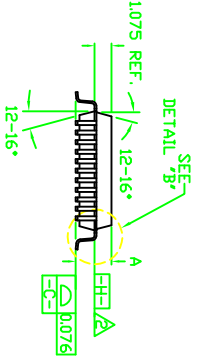
TOP VIEW



DETAIL 'B'



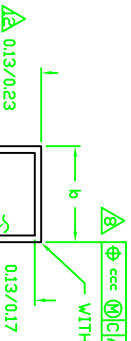
DETAIL 'A'



WITH LEAD FINISH

BASE METAL

SECTION C-C



DECIMAL ANGULAR ±

XXXX±
XXXX±
XXXX±
XXXX±
XXXX±
XXXX±

PRODUCTION

APPROVALS

DATE	BY	DESCRIPTION
10/03	T. KHAM	APPROVALS
10/03	K. MURRAY	APPROVALS
10/03	K. MURRAY	APPROVALS
10/03	K. MURRAY	APPROVALS
10/03	K. MURRAY	APPROVALS
10/03	K. MURRAY	APPROVALS
10/03	K. MURRAY	APPROVALS

From Industrial Co. Ltd.
318-25, Hwanggi-dong
Songdeok-ku, Seoul, Korea
Tel: 02-577-1172

1000 S. PRICE RD.
CHAMBERLAIN, ME 05802
Tel: 603-883-1112

31791

PACKAGE OUTLINE, MOFP, 10 MM X 10 MM BDDY,
160/015 MM FORM, 200 MM THICK

31791

31791

31791

31791

1 of 2