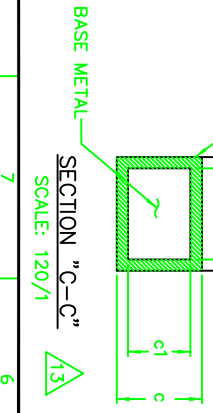
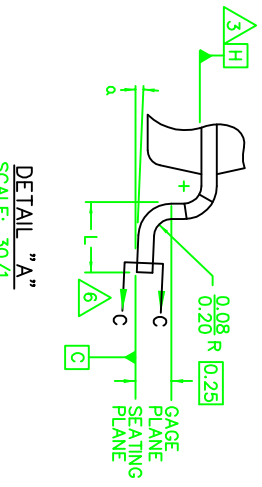
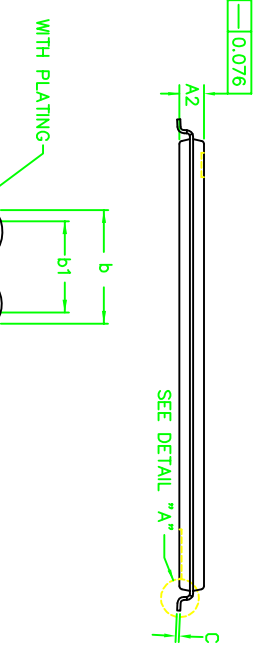
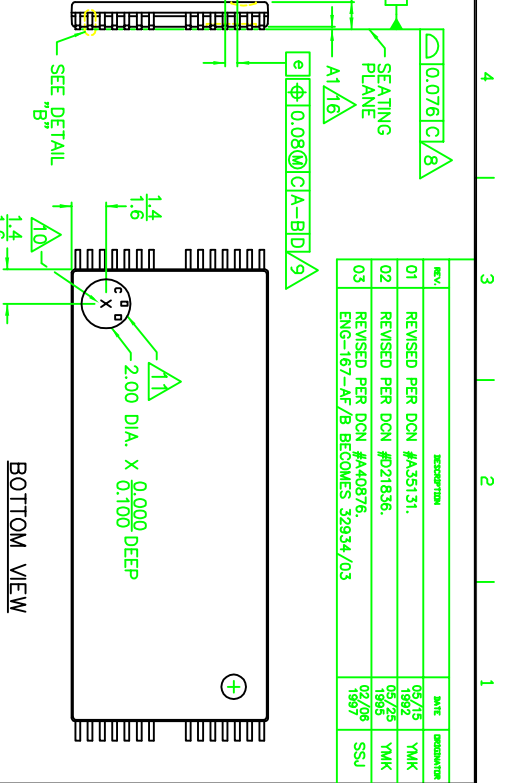
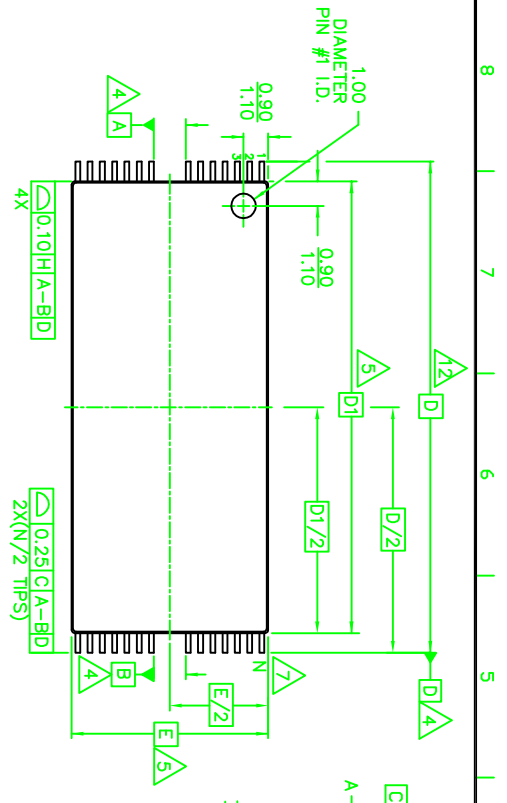


REV.	DESCRIPTION	DATE	DESIGNER
01	REVISED PER DGN #A351/31.	05/75	YMK
02	REVISED PER DGN #D21836.	05/75	YMK
03	REVISED PER DGN #A40876. ENG-167-AF/B BECOMES 32934/03	02/87	SSJ



DECIMAL ANGULAR		PRODUCTION		DATE		TITLE	
XXX±	±	SS JANG	05/92	SS JANG	05/92	PACKAGE OUTLINE, 28 LEAD, MATRIX,	
XXXX±	±	JD KIM	05/92	SS JANG	05/92	TYPE I, 8 X 20 mm TSOP	
FINISH		SS JANG	05/92	SS JANG	05/92	32934	REV. 03
DWG NOT SCALE DRAWING		YM KANG	05/92	YM KANG	05/92	6/1	SHEET 1 of 2

SINGIN  
 SINGIN INDUSTRIES, INC.  
 1000 Industrial Blvd., U.S. Motor/Parts Highway, Inc.  
 Austin, Texas 78761  
 (512) 424-1111  
 SINGIN  
 SINGIN INDUSTRIES, INC.  
 1000 Industrial Blvd., U.S. Motor/Parts Highway, Inc.  
 Austin, Texas 78761  
 (512) 424-1111